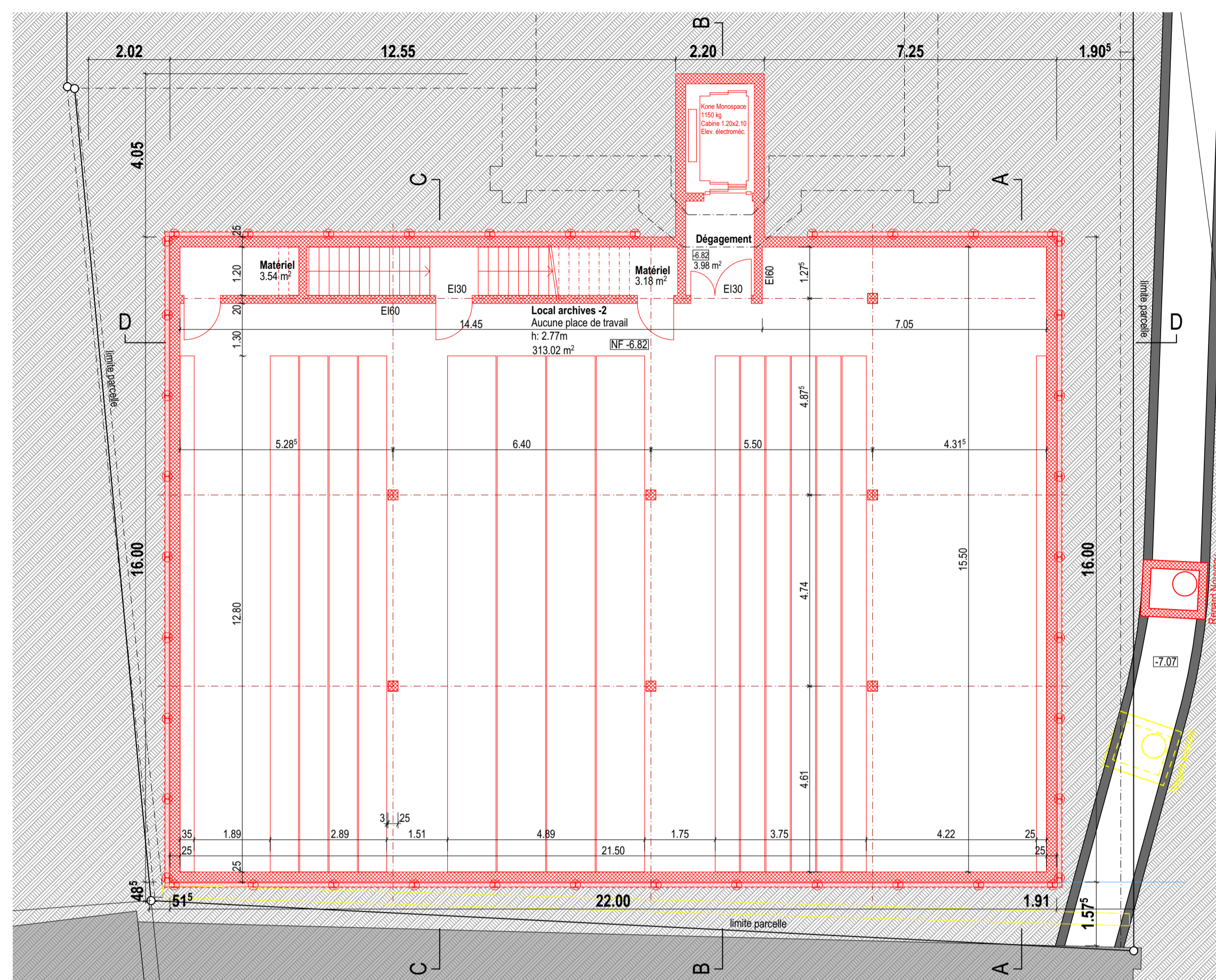


St-Imier + Bière, le 07.10.2021

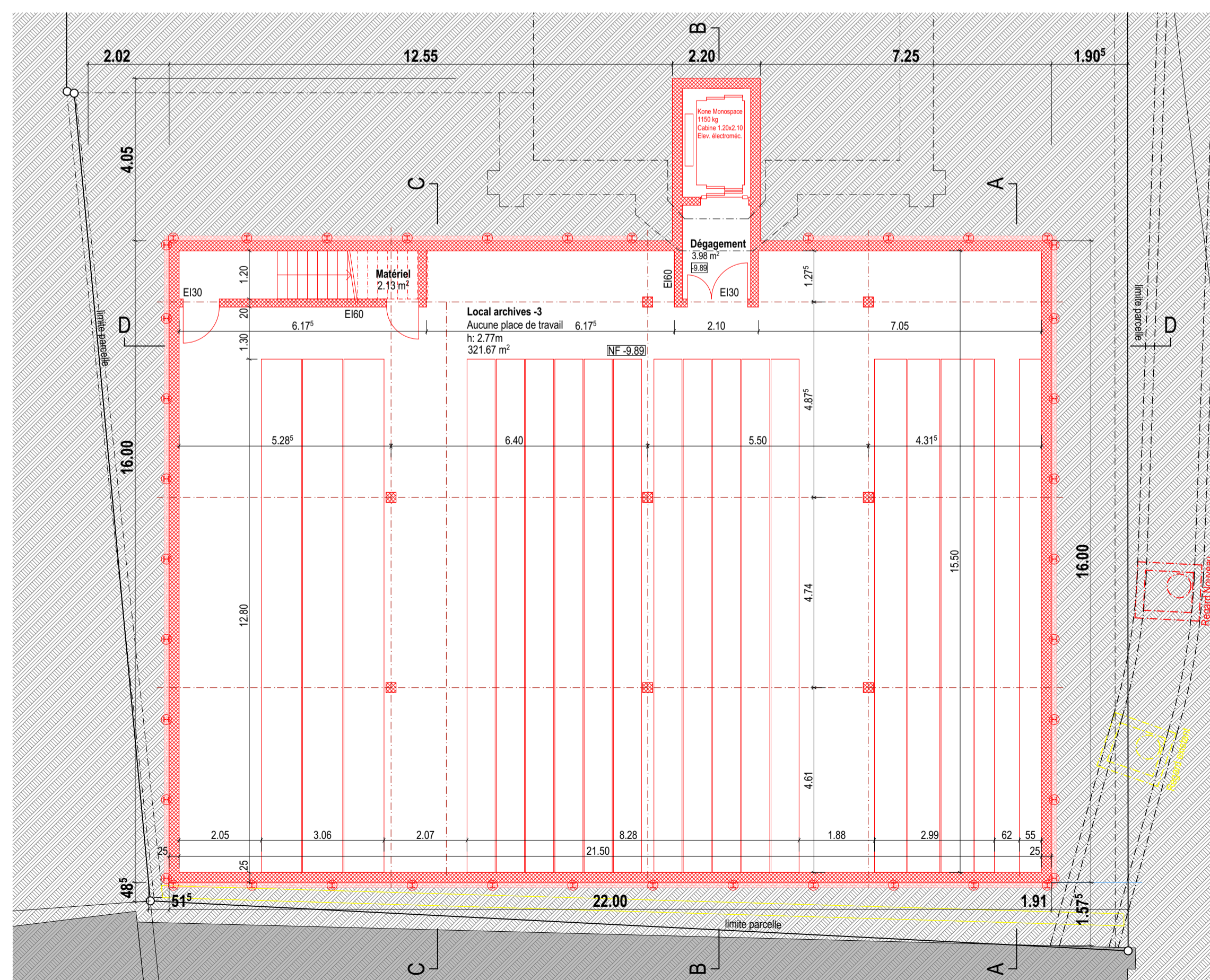
Maître d'ouvrage : .....

Architecte : .....

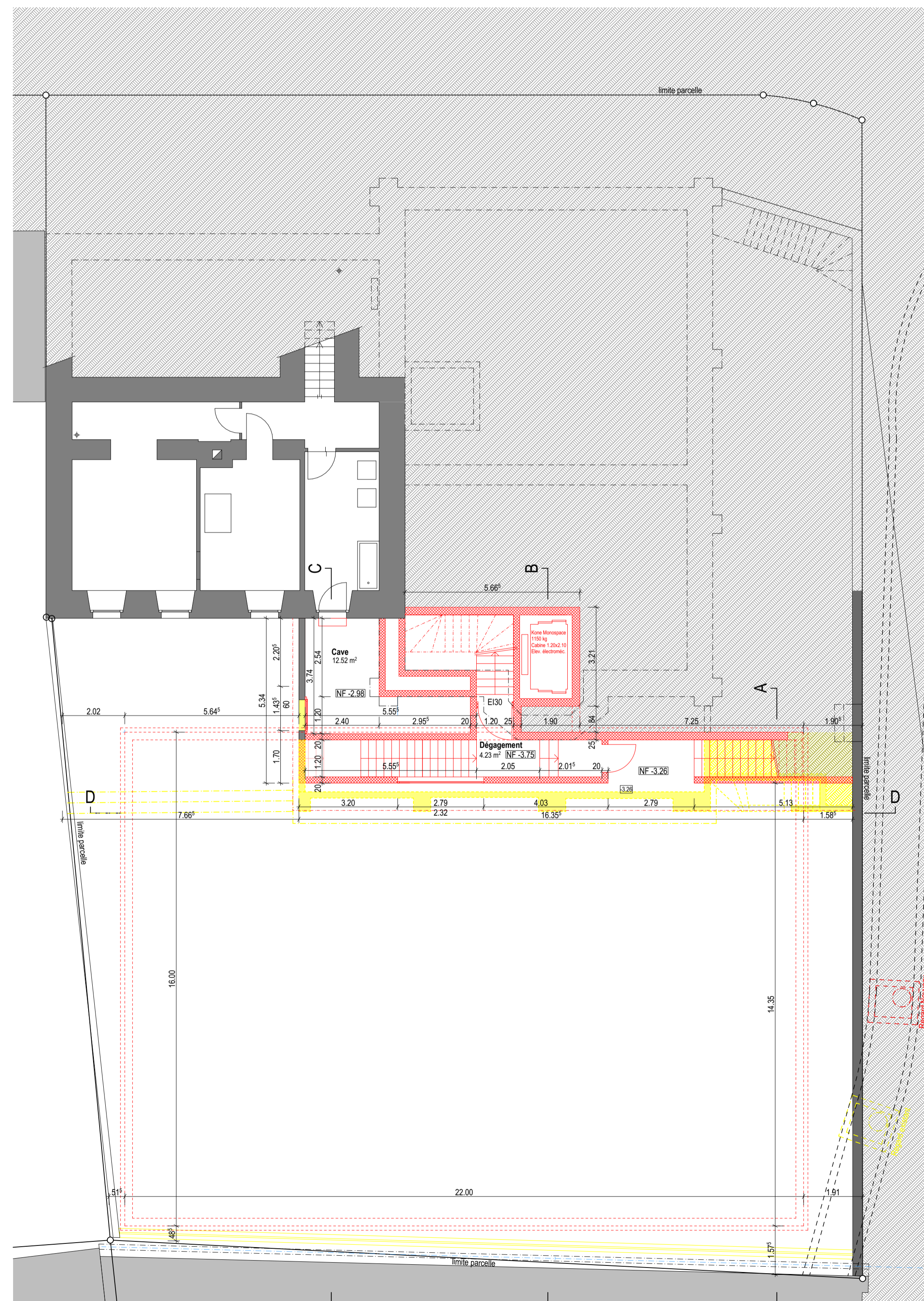
- ±0.00 = Hall rez inférieur existant
- Existant sans changement
- A démolir
- Nouveau: Béton armé
- Nouveau: Isolation



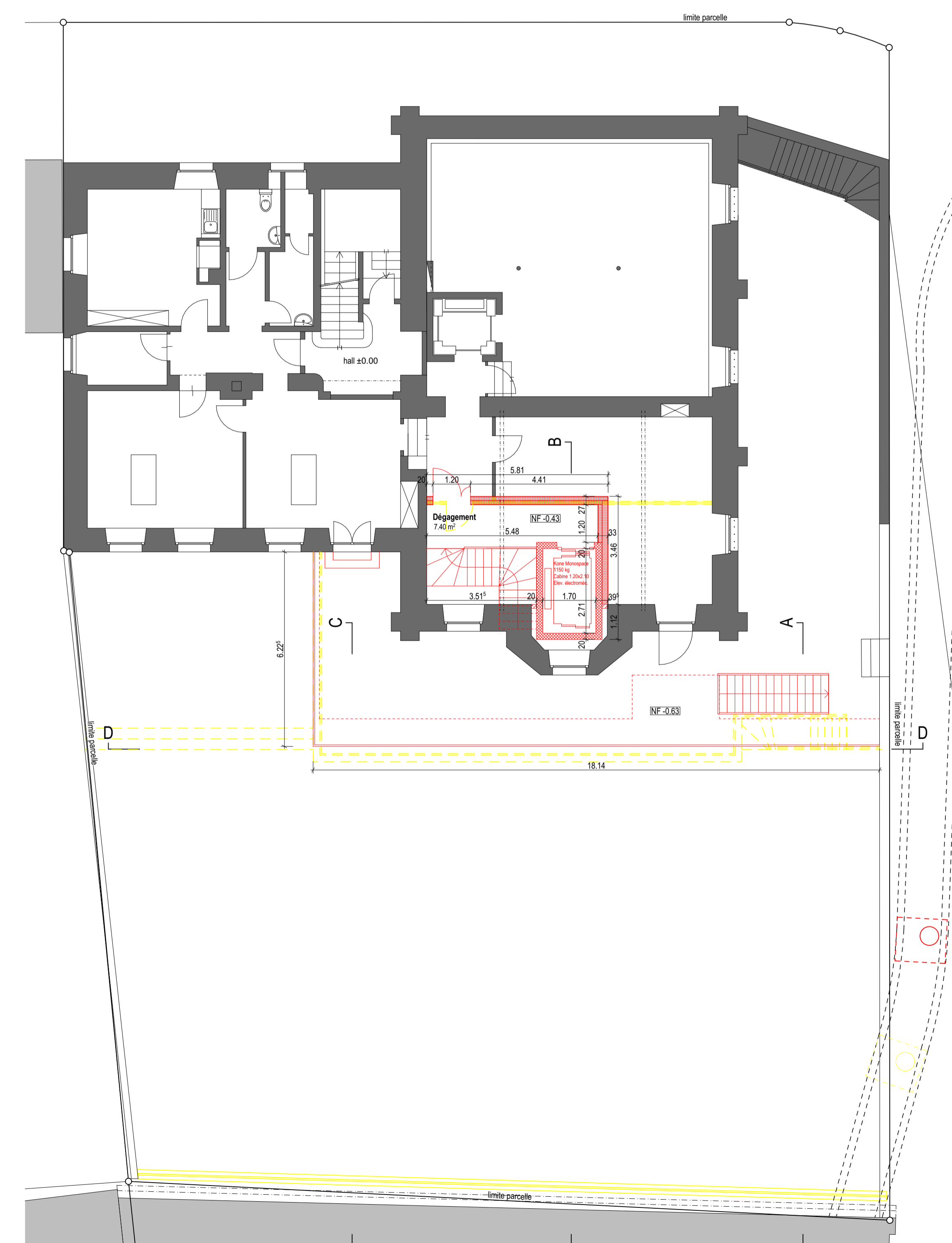
Sous-sol -2



Sous-sol -3



Sous-sol -1



Rez Inférieur