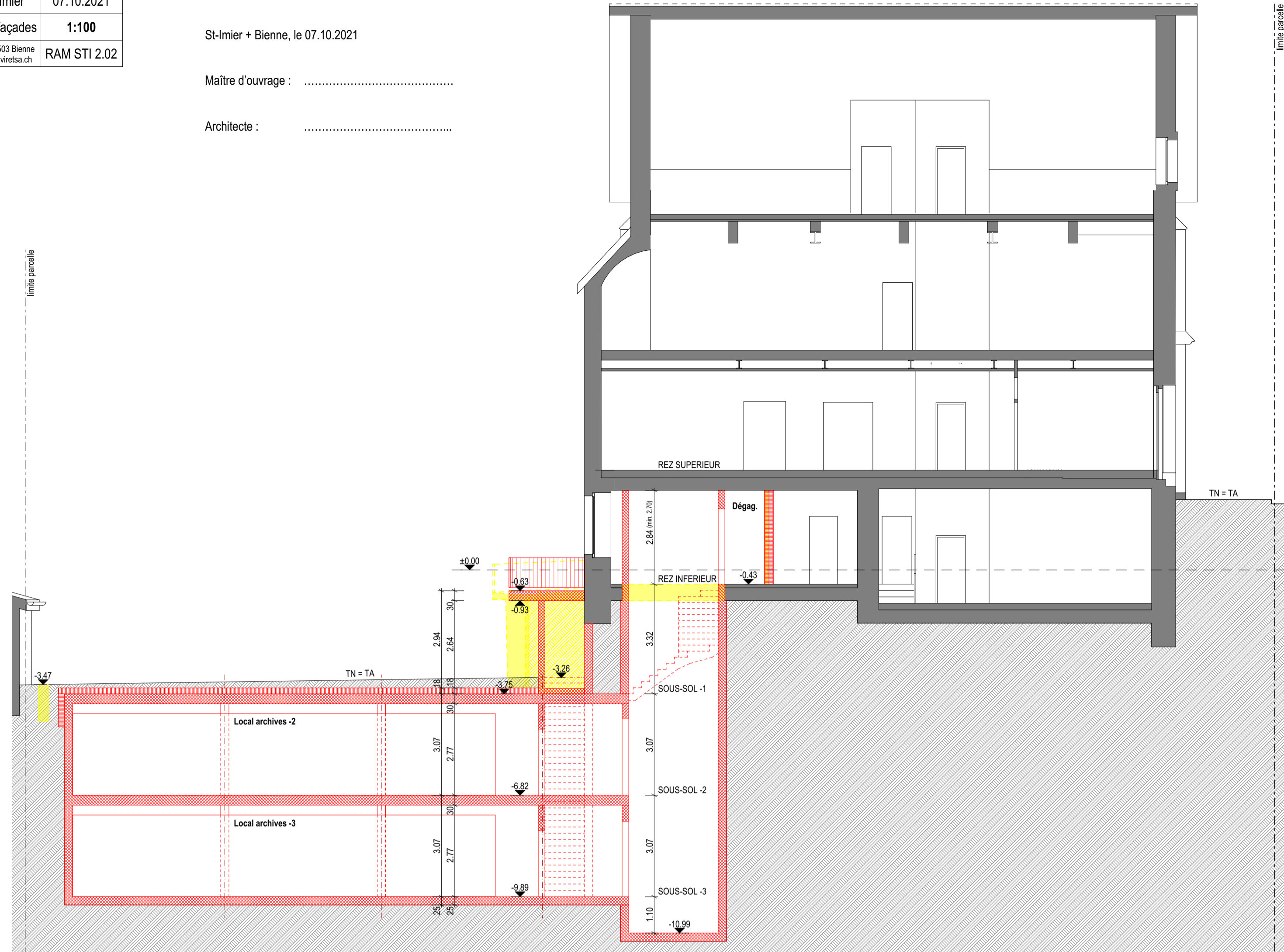
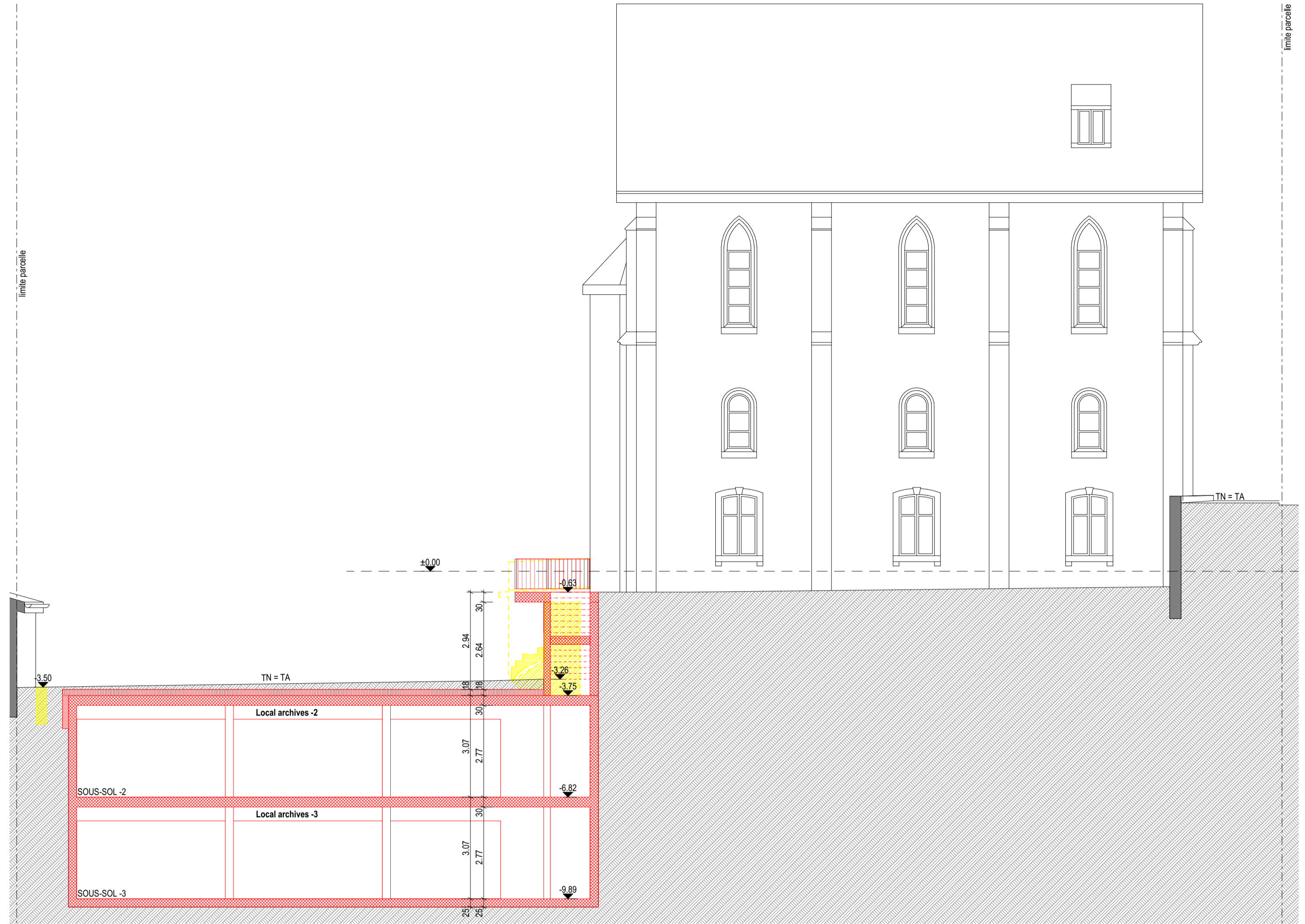


St-Imier + Bière, le 07.10.2021
 Maître d'ouvrage :
 Architecte :

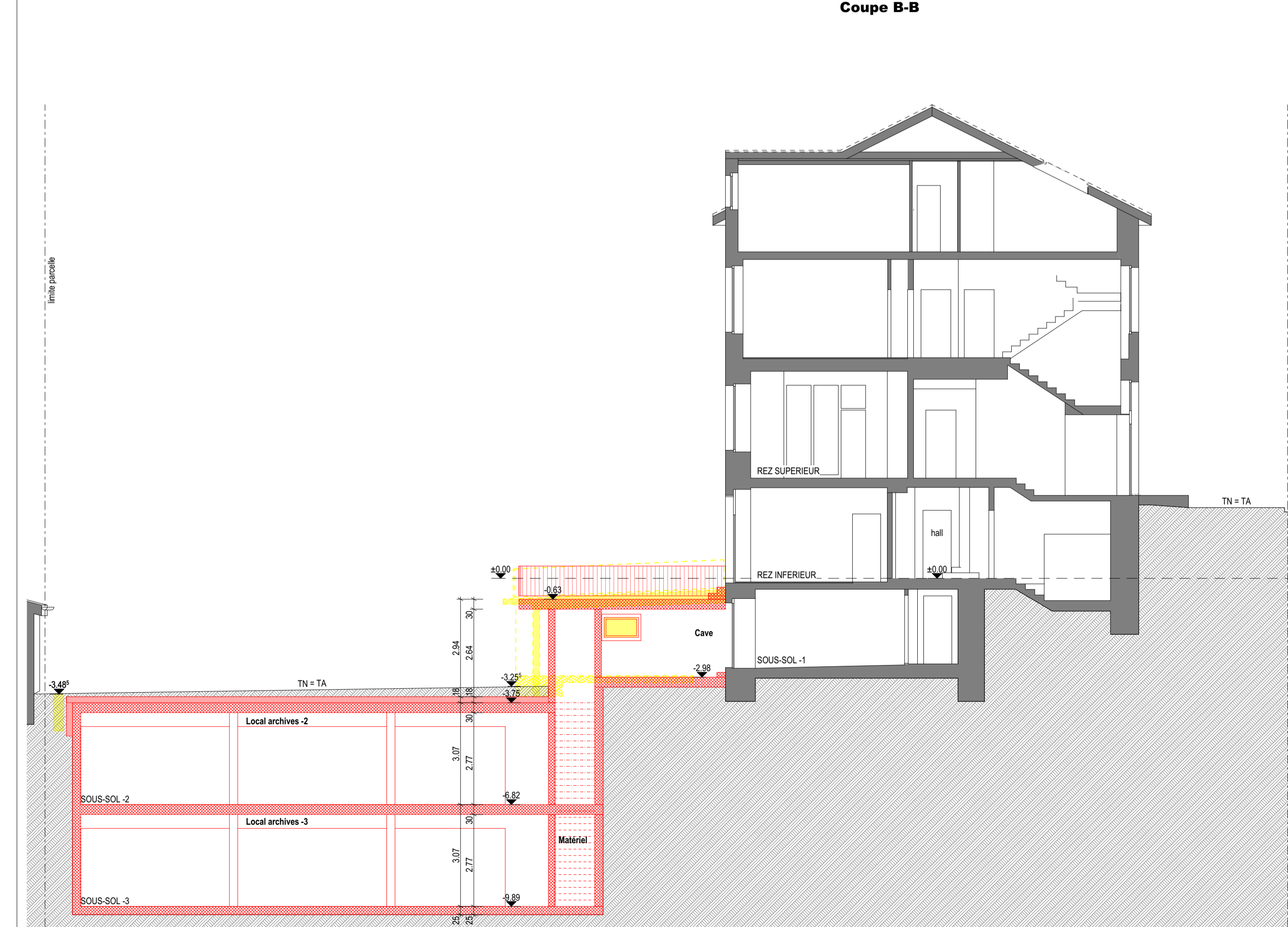
- ±0.00 = Hall rez inférieur existant
- Existant sans changement
 - A démolir
 - Nouveau: Béton armé
 - Nouveau: Isolation



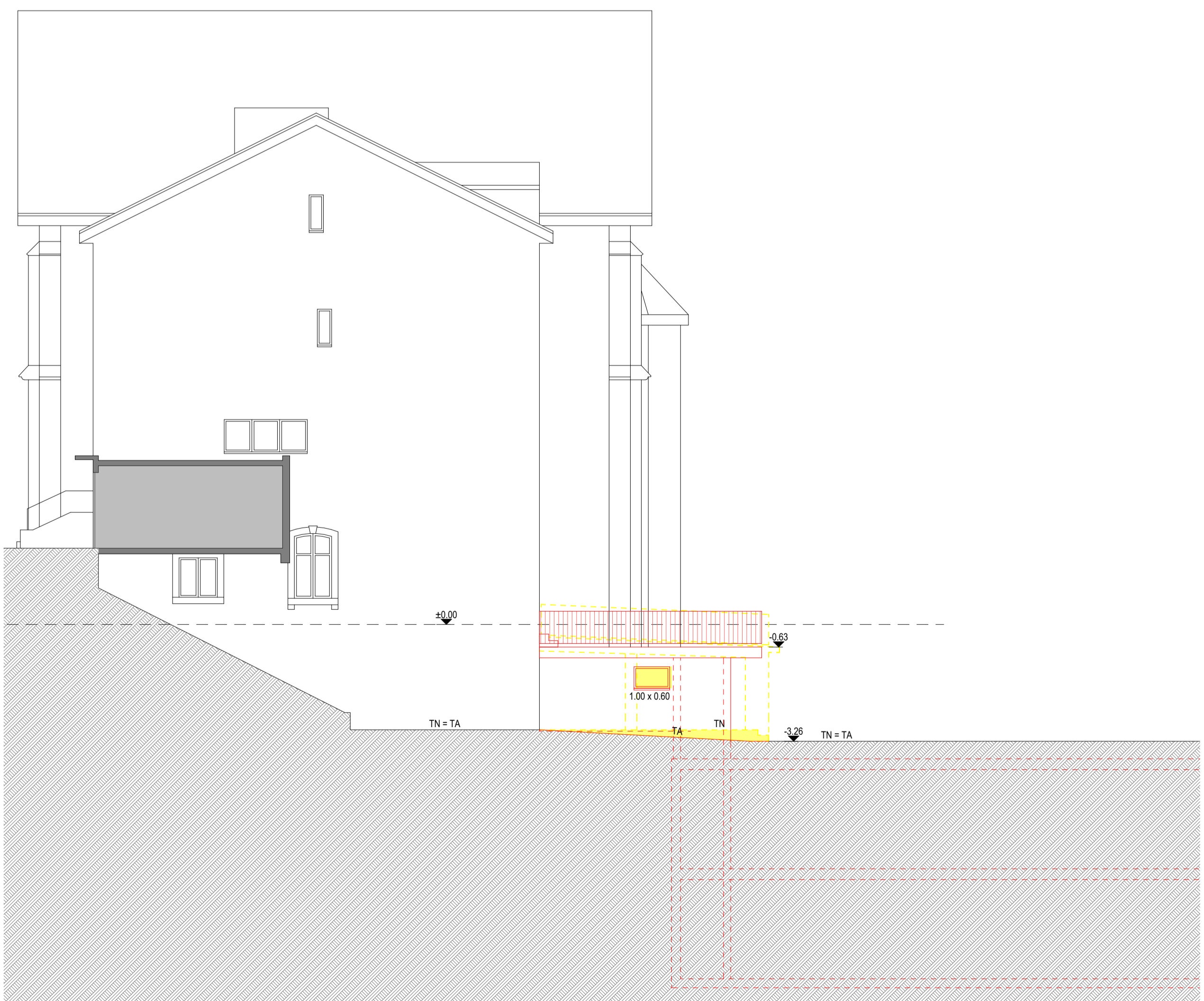
Coupe B-B



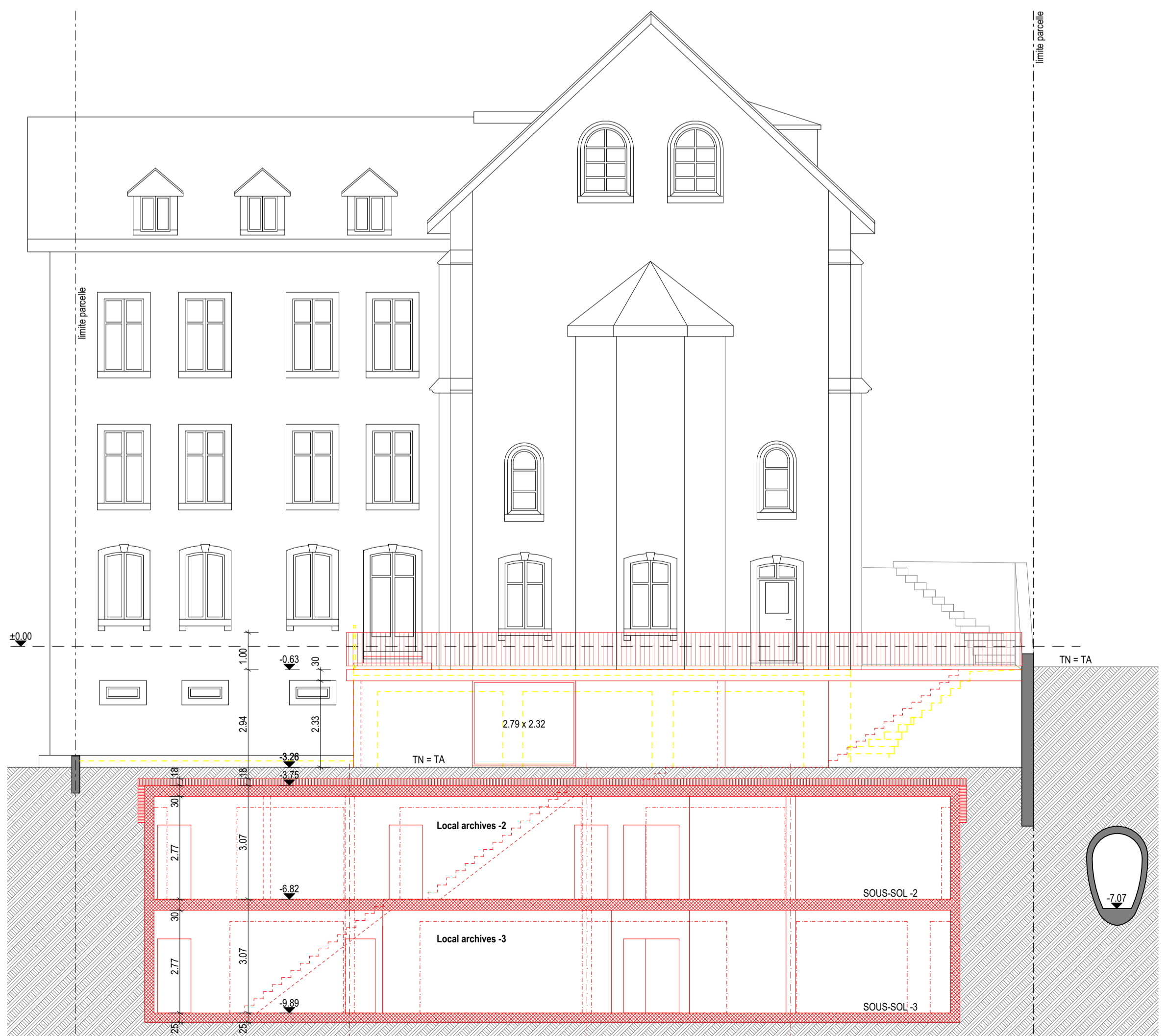
Coupe A-A



Coupe C-C



Façade ouest



Façade sud